

## Datalogging as standard

### for expanded performance

Autofim II and Autofim II GC have a sophisticated datalogging system, as standard, which enables you to keep a permanent data record. The memory is capable of storing 200,000 individual readings.

### Logging on demand

This facility simplifies site surveying by allowing the operator to store readings in a single file, as desired.

### Timed interval logging

Autofim automatically measures and stores data at user defined time intervals without an operator needing to be present. In this way gas concentration contours can be recorded over a period of time which is especially useful for process monitoring.

### Data transfer to PC

The detachable infra-red, fibre-optic link allows data transfer to a computer for further manipulation and presentation. The software is compatible with most recognised spreadsheets enabling you to integrate Autofim data with your reports and other records.



Photo: Courtesy of Shell Global Solutions



## performance

Range: 0 to 10,000 ppm (methane)

Detection limit: 0.1 ppm (methane)

Response time: less than 3 seconds

Hydrogen cylinder discharge time:

Refillable: up to 45 hours (30 hours in GC mode)

Disposable: up to 30 hours (20 hours in GC mode)

Sample flow rate: 700 ml/min (automatically controlled)

## display

240 X 64 pixels (132 x 370 mm)

## power

Battery life: up to 40 hours with 6 MN1400 Duracell alkaline batteries (certified Intrinsically Safe)

## operating conditions

Temperature: 0°C to 40°C

Humidity: 30% to 90% ERH non-condensing

GC column: operates at ambient temperature

## dimensions

Autofim II/II GC: 370(l) x 135(w) x 225 (h) mm Weight: with refillable hydrogen cylinder

Autofim II: 4.2kg

Autofim II GC: 4.5kg

## output

Audio output: variable pitch and adjustable volume

Electrical output: infra-red fibre optic cable to RS232 link

## certification

Approvals: EEx ib IIC T4, EEx d IIC T4

Standards: EN 50014, EN 50018, EN 50020



RF radiation: EN 50081-1

RF immunity: EN 50082-1

## standard accessories

	Autofim II	Autofim II GC
Fitted carrying case with strap	*	*
Telescopic probe & detachable survey head	*	*
Rechargeable hydrogen cylinder	*	*
Batteries	*	*
Particulate and hydrophobic filters	*	*
Downloading kit with fibre optic RS232 link to IBM compatible PC	*	*
Syringe & needle		*
Standard GC column		*

## optional accessories

### Autofim II & Autofim II GC

Range extender/diluter

Probes: bore hole probe, roller probe

Range of GC columns

Integrat GC SW package (PC)

Calibration kits: Methane in balanced air

Clean air kits for zeroing

Acoustic earphones

Spare fuel cylinders

Hydrogen filling panel

**Service:** Service schemes incorporating maintenance and calibration.



ISO 9001  
Cert. No FM 12734



# autofim //

portable flame ionisation detector

intrinsically safe detector for hydrocarbon gases

# autofim II

## Intrinsically safe detector for hydrocarbon gases



Monitoring gases in confined and potentially explosive situations has become increasingly important particularly in the wake of new environmental legislation.

Autofim II and Autofim II GC give you the flexibility and confidence you need to detect, measure and analyse hydrocarbon gases in virtually any hazardous location from petrochemical plants and gas works to landfill sites. These versatile products cover a wide range of applications including: volatile organic compound monitoring, fugitive emissions, process control, gas leak surveying, contaminated land and landfill sites.

Supported by one of the leading names in gas detection, with over 25 years experience, these two detectors are fast, accurate, reliable and, most importantly, intrinsically safe.

### **Intrinsically safe**

To safely detect gas in hazardous areas, it is essential your equipment is certified as intrinsically safe.

Autofim II and Autofim II GC have been designed so you can be confident that staff and plant are fully protected.

### **Reliable, fast and highly sensitive**

The Autofim range has been engineered to provide outstanding stability. So you can always rely on the results without the need for weekly re-calibration.

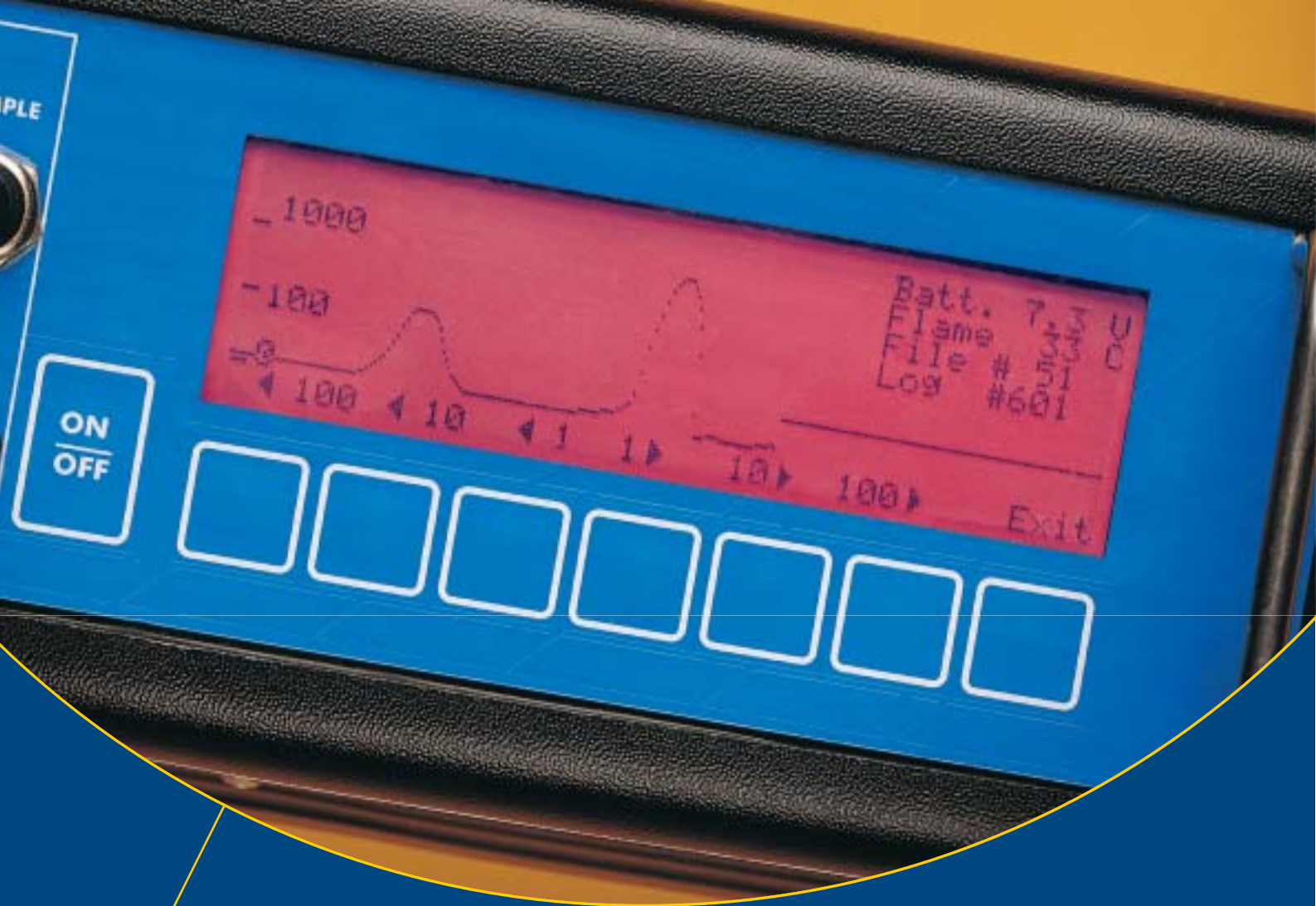
To localise leaks quickly and safely your detector must react rapidly and accurately. The flame ionisation detector ensures a rapid response: within 2 seconds. Expanded scales allow you to detect and measure gases with pinpoint accuracy even at the lowest levels.

### **Simple to use**

Autofim is easy to use with the operator being guided by user-friendly, menu-driven software.

For maximum clarity the signal is displayed in both digital and analogue formats plus a variable pitch audible output. Furthermore, the audible signal can be set only to trigger above an adjustable alarm level.





The system can operate for over 40 hours without changing the batteries or cylinder. However, replacement of these in the field is a simple operation for remote or extended use.

**Easy to read in the dark**

The back lit display allows you to take readings in tunnels, basements and other dark spaces without the need for additional lighting.

**Unrivalled measurement range**

Autofim covers the full range of measurement from 0 to 10,000 ppm in a convenient range of scales. The optional range extender/diluter allows measurements above 10,000 ppm as well as from oxygen depleted atmospheres.

**Light, portable and robust**

Weighing just over 4 kilos Autofim is truly portable.

# autofim // GC

for gas detection and analysis

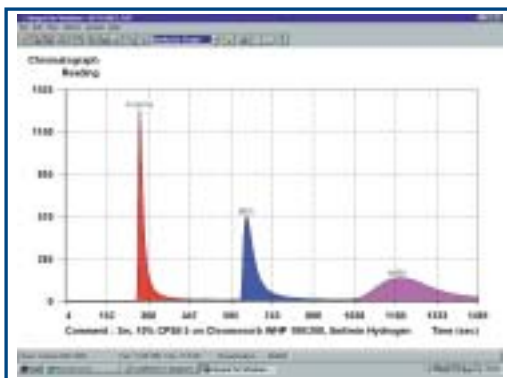
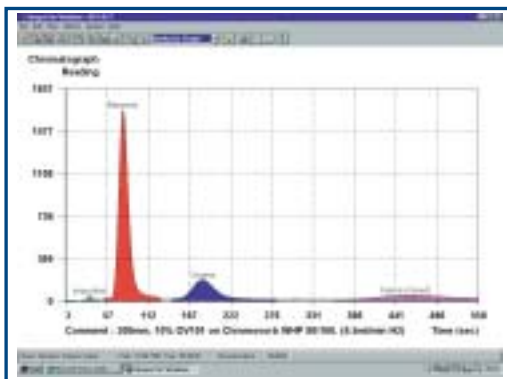
Autofim II GC, with in-built gas chromatography, can not only detect gas with all the benefits of Autofim II but can also determine its composition on-site.

There are many situations where it is necessary to determine the exact nature of the detected gas. Analysis is highly beneficial for compliance monitoring and essential for differentiating between natural gas and other hydrocarbons. Autofim II GC displays the chromatograph immediately, avoiding the delays and cost of laboratory analysis.

## Versatile

Having detected gas, a sample is stored in a holding loop. This can be analysed immediately or later, if more convenient. After analysis the GC data is stored in memory for subsequent reference.

Benzene, toluene & xylene



Ketones



## Wide range of gases

A series of high-resolution, chromatography columns are available; tailored to most applications including VOC's, natural gas, petrol vapours, and landfill emissions.

These can be easily interchanged, by the user, to address a variety of different site emissions.

## Detailed analysis

Data can be downloaded to an external PC for further analysis and presentation.

The Integraf software package, specifically designed for Autofim, analyses the data and displays a range of parameters including: retention times, peak identification, peak areas, methane/ethane ratios and relative concentrations. Graphical and tabular formats are available.

The overlay facility allows comparisons between your sample trace and a library of reference chromatograms.